

## 2.Land Details: Distance between Farthest pieces

### 1.Gannavaram Airport to Bapatla Engineering College

Best 2h 23m 2h 16m 4h 46m 23 hr

Your location

Vijayawada International Airport, NH 16, C

Add destination

Leave now Options

Send directions to OnePlus CPH2423 Copy link

via Guntur - Chirala Rd and NH 16 2 hr 24 min 103 km

Fastest route, the usual traffic

⚠️ This route has tolls.

Details Preview

New! Continue your trip, tap the notification on your phone to get directions

Search along the route... Gas EV charging T

Vijayawada విజయవాడ

Mangalagiri మంగళగిరి

Tenali తెనాలి

Chilakaluriపేట చిలకలూరిపేట

Sattenapalle సత్తెనపల్లి

Narasaraopeta నరసరావుపేట

Parchoor పర్చూర్

Gannavaram గన్నవరం

Gudivada గుడివాడ

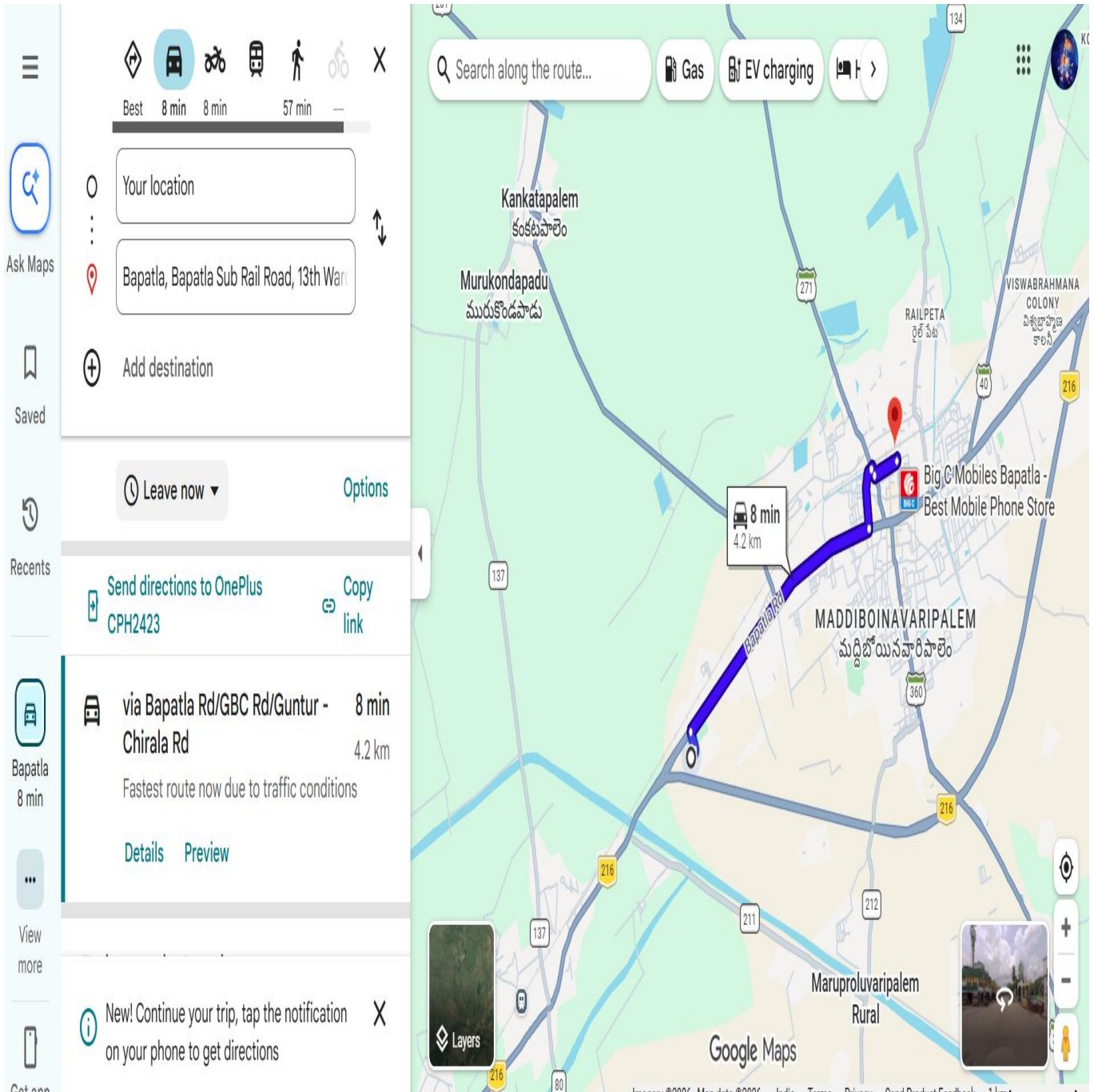
Pedana పెదన

Machilipatnam మచిలీపట్నం

Diviseema దివిసీమ

Google Maps

## 2. Railway station to Bapatla Engineering College



### 3. Bus stand to Bapatla Engineering College

The screenshot displays the Google Maps interface with a bus route highlighted in blue. The starting point is 'APSRTC BUS STAND, BAPATLA, New Bus' and the destination is 'Bapatla Engineering College'. The route is 5.0 km long and takes 10 minutes. The map shows the route passing through GBC Rd/Guntur - Chirala Rd. The interface includes a search bar, transport mode icons (Best, 10 min, 10 min, 1h 8m), location input fields, and a sidebar with 'Ask Maps', 'Saved', 'Recents', and 'View more' options. A notification at the bottom says 'New! Continue your trip, tap the notification on your phone to get directions'.

Search along the route... Gas EV charging

Best 10 min 10 min 1h 8m

Your location

APSRTC BUS STAND, BAPATLA, New Bus

Add destination

Leave now Options

Send directions to OnePlus CPH2423 Copy link

via GBC Rd/Guntur - Chirala Rd 10 min  
Fastest route, the usual traffic 5.0 km  
Details Preview

Explore nearby APSRTC BUS STAND, BAPATLA

New! Continue your trip, tap the notification on your phone to get directions

Google Maps